



WICKERSLEY  
PARTNERSHIP  
TRUST.

# Welcome to **The Gainsborough Academy**

A helpful guide for students and parents



# A VERY WARM WELCOME TO THE GAINSBOROUGH ACADEMY

At The Gainsborough Academy we want all students to leave able and qualified to play their full part in an ever-changing world, through an ambitious, creative and innovative curriculum. This means we want all of our students to start their lives equipped with not only qualifications, but also the skills and attributes that they will need to deal with the challenges of life beyond their time at TGA.



# AS ADULTS. WE KNOW THAT OUR CHILDREN WILL SOMETIMES FACE ADVERSITY AND FRUSTRATION.

We aim to work in partnership - parents, students and teachers - to develop our children as resilient individuals with the determination to overcome barriers. For that reason, we say and do things in a certain way at TGA: "The Gainsborough Way". This allows us to promote the skills our children need to develop their independence, responsibility and resilience.

We promote a high challenge, low fear environment, where students are encouraged to have a go without fear of making a mistake. Children are encouraged to learn from their mistakes, as the most valuable achievements are the ones they have worked hardest for. Working together, the Gainsborough Way will help us ensure that our children leave ready to play their full role in the world.

Our vision is to be an Outstanding School, where all students have every opportunity to fulfil their potential; a school where our challenging and diverse curriculum and high quality teaching and learning, alongside our supportive pastoral care will secure success and achievement for all.

Our school is business-like and purposeful and our students want to learn. Smart dress, good attendance and punctuality underpin our ethos of high expectations.

We are 100% child centred and believe that all children have the right to a quality education, and we encourage, challenge and support every child.

**We strive for excellence  
in everything we do.**

# School Day

Time	Period
8.30 - 8.45am	Form Tutor Time
8.45 - 10.05 am	Lesson 1
10.10 - 11.25 am	Lesson 2
11.25 - 11. 55 pm	Break 1
11.55 - 13.10 pm	Lesson 3
13:10 - 13.45 pm	Break 2
13.45 - 3.00 pm	Lesson 4

Students will receive timetables on the first day of term.

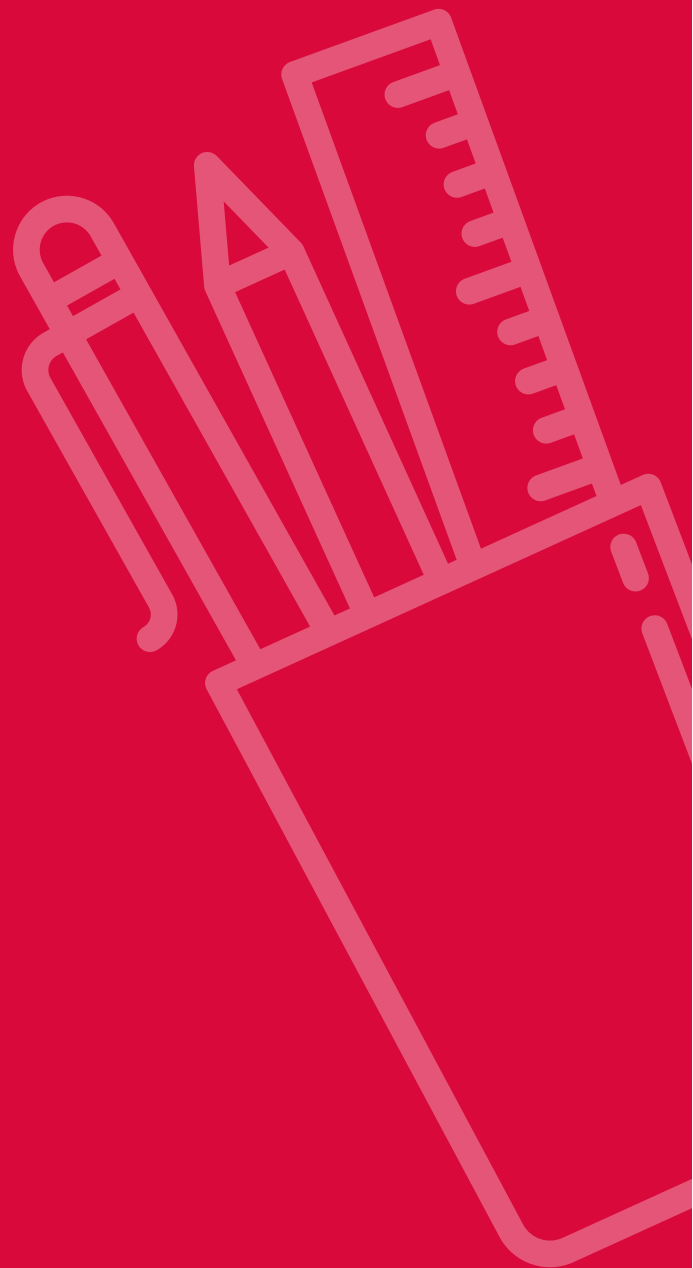




# Equipment

We all recognise that we come to school to learn. In order to do this it is essential that you bring the correct equipment every day.

- ✓ • Pencil Case
- ✓ • Pen
- ✓ • Pencil
- ✓ • Ruler
- ✓ • Coloured Pencil Crayons
- ✓ • Calculator
- ✓ • Compasses
- ✓ • Protractor
- ✓ • PE Kit
- ✓ • Exercise Books / Folders



# Attendance

To achieve your best, you must be on time and in school every day.

You should only be absent if you have a really good reason for being away. Research shows that students with attendance of over 95% produce the best results at GCSE.

Therefore, being in lessons will help you with your learning. Your attendance will appear in your school reports and is reported to colleges or employers when you leave school.

If there is a problem that prevents you attending, there is always someone in school who you can talk to about it; your Form Tutor or Non-Teaching Assistant Head of Year.

**THE ATTENDANCE TEAM WILL ALWAYS HELP YOU GET THE SUPPORT YOU NEED.**





# Illness & Medical Appointments

If you are ill, please telephone the Attendance Team on 01427 612411 Option 2 before 9am the same day.

For absences known in advance, e.g. a medical appointment, a note must be provided. This should be presented to the attendance office before you sign out. You should sign back in on your return. If you are not at school we need to make sure you are safe. We will text or telephone your parent/carer to ensure they are aware that you are not in school. It is our duty to investigate unexplained absences either through school or the Early Help Team.

## Holidays In Term Time

We will NOT authorise holidays in term time. Any holidays taken will be classed as an unauthorised absence from school.



## Punctuality

If students arrive after 8.30am they will be registered as late.

We value punctuality for a number of reasons: it ensures that lessons start on the most positive footing, it avoids classroom disruption and it minimises wasted time for both students and teaching staff. Furthermore, it is an issue that many companies will consider when interviewing candidates for employment or training.

# Behaviour & Expectations

We are all members of the school community and it is expected that everyone acts with consideration and courtesy for others at all times.

## Code of Conduct

All students are responsible for their own behaviour in and out of the classroom. They should, in each lesson, take personal responsibility for their actions and follow the necessary sanctions placed on them by staff.

## Student Classroom Conduct

- Attendance is crucial to academic achievement and students are expected to attend school every day.
- Punctuality is a direct example of a student who is ready to learn and we expect all students to arrive to school and all lessons on time.
- Uniform is important in ensuring a calm and business like atmosphere in school and students are expected to attend school in full uniform without exception.
- Equipment ensures all students are ready to learn. We expect all students to arrive to lessons with the correct equipment: This is inclusive of PE kit, books and as a minimum a pen, pencil and ruler.
- All students are expected to line up calmly ready to enter lessons. This is to ensure a meaningful start to each lesson.
- Students must remove all outdoor clothing on entering the classroom and get out their equipment.
- All classroom teachers' instructions must be adhered to at the first time of asking.





- All requests from members of staff should be carried out without argument.
- No student should be disrespectful to, or show rudeness towards, anyone in school.
- During the school day, mobile devices must be turned off and in your bag. If seen this will be confiscated without exception.
- Earphones or charging devices in lesson or anywhere on school site are not permitted. If seen, they will be confiscated immediately and without exception.
- Bullying will not be tolerated.

## Classroom Teacher Expectations

All classroom teachers are responsible for behaviour and learning within their own classroom. They should, in each lesson, take personal accountability for dealing with incidents and following through necessary consequences and restorative practice to ensure behaviour is approached with consistency.

# The Gainsborough Way

We say and do things in a certain way at Gainsborough, referred to as 'The Gainsborough Way.'

The Gainsborough Way allows us all to promote the skills and attributes you need in order to develop independence, responsibility and resilience to have a happy and successful life. It defines who we are and what we stand for at The Gainsborough Academy

## The Gainsborough Way:

1. We believe in ourselves
2. We take responsibility for our choices and actions
3. We take risks and rise to a challenge
4. We dream big
5. We work hard and never give less than our best
6. We support others around us
7. We take pride in our school community
8. We are prepared to make mistakes and learn from them
9. We are equipped to learn
10. We are respectful and we listen to others
11. We take pride in our appearance
12. We are proud of our achievements

**Working together in this way will help us all ensure that TGA students leave school able and qualified and ready to play their full part in the world.**





Students are proud to be part of the school and talk very positively about the Gainsborough Way



# School Uniform

- Clip on tie for all
- School approved trousers or skirt with WPT logo.
- White shirt.
- Black V neck jumper with school logo ( compulsory )
- Black Blazer with school logo ( optional )
- Footwear must be plain black formal shoes with no stripes or logos.
- Make-up should be discreet and minimal with no false eyelashes, false finger nails, bright or garish nail colours.
- Extreme haircuts are not allowed.

*It is the School's discretion as to what constitutes 'extreme' but usually involves shaven heads, multi-coloured or unusually coloured hair.*

- Jewellery must be kept to a minimum; no more than one small earring, sleeper or stud in each ear. No other facial and body piercings are allowed on school site.

*Gold, silver and bronze award pin badges should be worn as part of school uniform.*

*Please note: Protective clothing is required when students use the school workshop and other craft facilities and these will be provided by the school.*





# PE Kit

The compulsory PE kit consists of:

- TGA T-shirt/black T-shirt
- TGA hooded top (optional)
- Black socks
- Black shorts or tracksuit bottoms
- Sports trainers
- Jewellery must never be worn during games or PE lessons.
- Hair should be tied back.
- Please ensure you or your parents label your PE kit.





# Gainsborough Extra

Taking part in extracurricular activities is a vital part of school life and at TGA we offer a fantastic range of clubs to all students.

These activities provide students with experiences they will remember in the future and also build invaluable life skills such as determination, resilience and confidence. It's also a great way to make new friends and work in teams.

As part of a team, you will be given the opportunity to represent school at events and matches. All our students are expected to show the same high standards out of school, as they do in school, both in behaviour and uniform.

A lot of hard work goes into building great teams and regular participation and practice is expected in order to be selected for such events. In order to enable all students to take part in extracurricular activities, we offer a full timetable of clubs across the week, including breaks and after school.

Here are just a few of the clubs you could take part in:

- Football
- Netball
- Dance
- Badminton
- Climbing
- Athletics
- Rounders
- Cricket
- Choir
- Drama
- Keyboard club
- Art & Photography
- Chess
- Science club
- History club
- Maths club
- Pride Club
- Cooking Club







# Gainsborough Pledges

At TGA we believe that we should send our students out into the world able and qualified and with basic life skills that will last a lifetime.

These activities provide students with experiences they will remember in the future and also build invaluable life skills such as determination, resilience and confidence. It's also a great way to make new friends and work in teams.







As part of a team, you will be given the opportunity to represent school at events and matches.

All our students are expected to show the same high standards out of school, as they do in school, both in behaviour and uniform.



A lot of hard work goes into building great teams and regular participation and practice is expected in order to be selected for such events. In order to enable all students to take part in extracurricular activities, we offer a full timetable of clubs across the week, including breaks and after school.

**Active Citizenship** - Preparing you for life in modern society.

**Life Skills** - Equipping you to deal with a range of life experiences.



**Cultural Experiences** - Enabling you to learn about your local community and support diversity.

# Data

## Target Setting

You will complete baseline tests in English, Maths and Science. We use these scores, alongside data we receive from Primary Schools to set targets in Year 7 and 8 in all subjects.

These targets are the levels we expect you to achieve in each subject. They are realistic, so you are capable of achieving your target; they are also aspirational, encouraging you to strive to attain the best possible level.

## Key Terminology

### Target Level / Grade

This is the level / grade that you should aim for.

### Current Attainment

This is the level / grade that you are currently working at.

### Predicted Level / Grade

This is the level / grade that you are expected to be working at by the end of the year / end of Y11 at GCSE.

## Effort

Alongside attainment data, you receive an Effort Grade in each subject from your teacher. Effort is graded as: Excellent, Coasting, Requires Improvement or Poor. This gives you an insight into your behaviour and attitude in lesson.

All students are capable of achieving 'Excellent' for effort, regardless of ability. You are also given an 'Effort Rank' - this is a clear indicator of how hard you are working relative to other students in the year group.

For example, in a year group of 200 students, a student with an "Effort Rank of 1 out of 200" has Excellent effort in all of their subjects. If there are 30 students with Effort Rank 1, a student with "Effort Rank of 31 out of 200" will have mostly Excellent effort with one Coasting effort. "Effort Rank 200 out of 200" indicates that effort must improve in all subjects. You should always strive to be top of the Effort Rank.

## Data Collections & Full Reports

Your parent/carer will receive a Data Report for you three times per year. In Y7 and Y8, this will include a “breakdown” of the objectives you have studied during the term.

Here, you will be able to see how many objectives you have mastered successfully. Some of the objectives that you have not yet achieved will be included in the report as a subject specific target. These targets are important skills or vital areas of knowledge, which will be central to you making progress in each subject.

In Y9 - Y11, you will receive information about your current attainment and the predicted grade submitted by your teacher for the end of Y11. Personalised subject specific targets will indicate what you need to do to improve your attainment.





# Rewards

## Gold, Silver & Bronze Awards

Our students wear their Gold, Silver and Bronze badges with pride and it's become a TGA tradition to wear these on ties as a marker of the many wonderful achievements.

Badges are awarded after each Data Collection and the criteria for these takes account of:

- Effort
- Attendance
- Punctuality

At the end of each year, we identify success across all of the data collections with our Bronze, Silver and Gold Rewards Pyramid where we celebrate the achievements of those students who consistently meet the highest standards.


The names of all of our award winners go up on our corridor displays to celebrate their success.





# Gainsborough Pledge Awards

As part of our new whole school initiative to promote Life Skills, Active Citizenship and Cultural Experiences through Enrichment, we will be celebrating the achievements of our students who have completed parts of The Gainsborough Pledge.



There are three levels of award available starting with Bronze, through to Silver and finally Gold and the Pledge tasks. There are a separate set of TGA Pledge tasks for KS3 and KS4. TGA Pledge completers will receive our new Pledge Badges as part of our TGA Pledge Celebration event.

## 100% Attendance

Every term students with 100% attendance for that full term are invited to have their photo taken as a whole group, this is then displayed around the school. Students receive a letter home praising them on their attendance and also receive a prize.





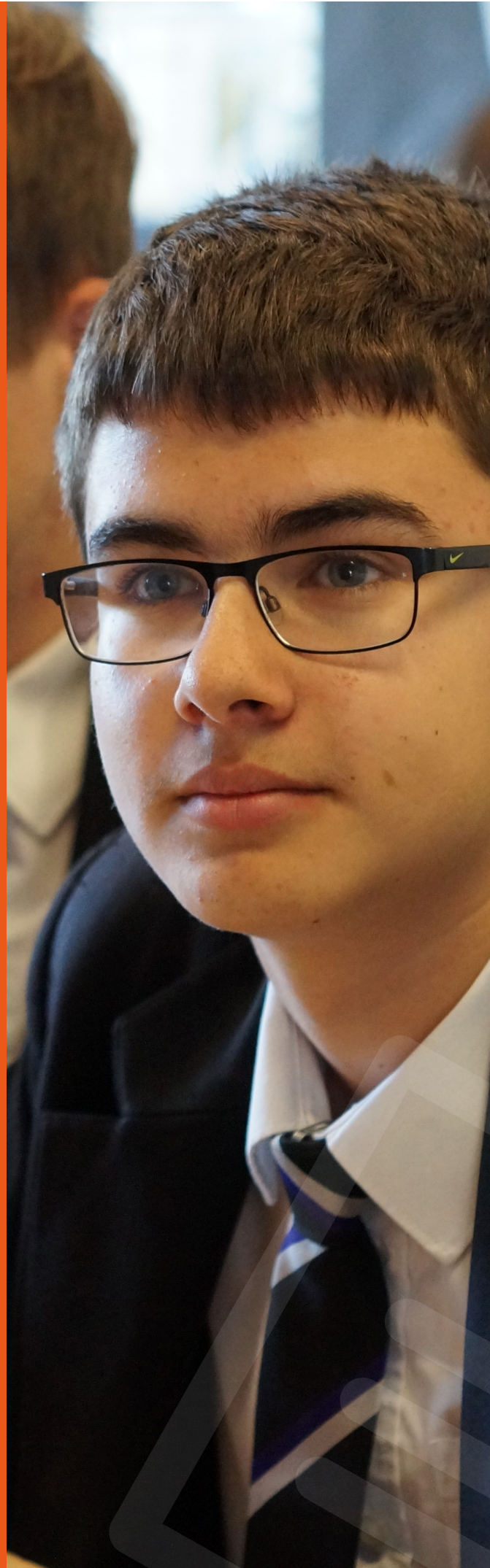
# Rewards

## Effort Ranking System

The effort rank will be displayed around school for students who have been ranked number 1 for the longest amount of time. In addition students who are number 1 in the effort rank will receive letters and phone calls / texts home. Students who are recognised for outstanding effort and improved effort have photo rewards that are sent home to parents.

## Cause for Praise (CFP)

Our simplest and possibly most effective method of praise is the CFP. When a student has gone above and beyond the usual high expectations, staff complete a Cause For Praise which is shared with Form Tutors, HOY and, as often as possible, parents.





## Form Time Incentive League

Students are now grouped in tutor based on attendance, effort and behaviour within school and compete against their peers.

Each Year team runs an incentive league using the forensic analysis of data on a week to week basis. The Year Leader will analyse how many CFCs, CFPs, late marks and what the attendance of each form was during the week. The forms are also set personalised targets from the Year Leader to meet each week.



# Rewards



## Subject Awards

Each term, teachers across school choose a student from each of their classes who is deserving of a 'Subject Award.' These can be won by any student in Y7 – Y9 who consistently goes the extra mile in their subject.

## Awards Assemblies

The Awards Assemblies take place at the end of each academic year and celebrate the success of students from year groups 7-10. The assemblies celebrate the achievements made by our students over the course of the last 12 months both in and out of school; in particular those who have excelled in subject areas, improved their effort or demonstrated outstanding effort consistently. The assemblies also celebrate attendance and endeavour.

## Passport to the Prom

In Year 11 students have a 'Passport to the Prom' which they use to record progress on a weekly basis. Students who are successful in meeting targets, academic achievement, consistent effort and attendance can win rewards specifically linked to the prom at the end of the school year.





# Notes

## Week 1

---

---

---

## Week 2

---

---

---

## Week 3

---

---

---





# Notes

## Week 1 - AHoY

---

---

---

## Week 2 - HoY

---

---

---

## Week 3 - SLT

---

---

---



